

# Getting Started Instructions for the Access USB and Access 2 USB Probers

## PC Recommended Requirements

The following recommendations are provided to assist you in purchasing the correct computer system to use with the Huntron Workstation software. These are the recommended minimum computer requirements:

- PC with multicore processor; Intel i7 or similar recommended
- Microsoft Windows 7, 8 or 10
- Solid State hard drive
- DVD drive
- 8GB RAM or more
- 1920x1080 minimum video resolution
- Keyboard and Mouse
- Internet connection
- Available USB 2.0 ports – 2 ports with Tracker and Access Prober combinations

## Installing the Huntron Workstation Software

**NOTE: Install the software before installing or connecting any hardware.**

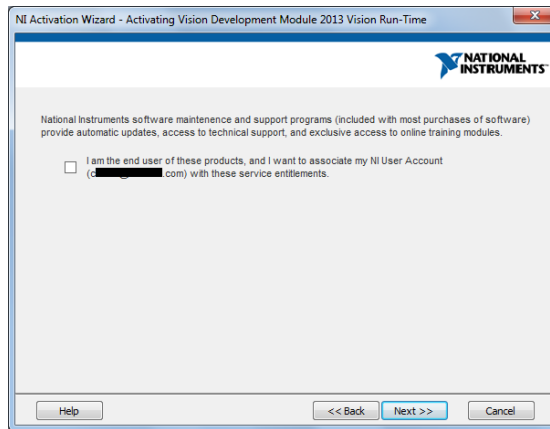
Uninstall any previous versions of Workstation prior to installing the new version. Insert the Huntron Workstation DVD. The DVD should Autorun and begin the installation process. If your PC has Autorun disabled then open a browser window to the DVD and select WorkstationSetup.exe. This will begin the installation process. Follow the on-screen instructions to proceed to install Workstation.

During the install you will be asked (Yes or No) to install additional software for Access Probers. Select the appropriate response based on your Prober hardware. Follow on-screen prompts to install the additional software.

- Access USB Framer Grabber for Access and Access 2 Probers; selecting this will install the Sensoray software necessary for the USB camera on an Access or Access 2
- NI Vision Runtime for all Access Prober: selecting this will install the National Instruments Vision Runtime used with the Workstation Auto-Align function. Have NI Vision Runtime serial number (located on the Workstation DVD envelope and on the NI license document)

available. See **Appendix A** at the end of this document for more details on the NI Vision installation.

- During the NI Vision installation process you will be prompted to activate the software including a request to associate your NI account with the product. We **recommend that you uncheck this request** to avoid having to complete registration transfer forms (see image).



**Note for Windows 64bit:** Windows 64bit requires that the NI Vision Runtime be installed as an Administrator. Browse to the Workstation DVD/Vision folder and locate “Setup.exe”. Right-click the file and select “Run as Administrator” to install.

- DFK USB Camera driver installation: Select **NO** for this option.

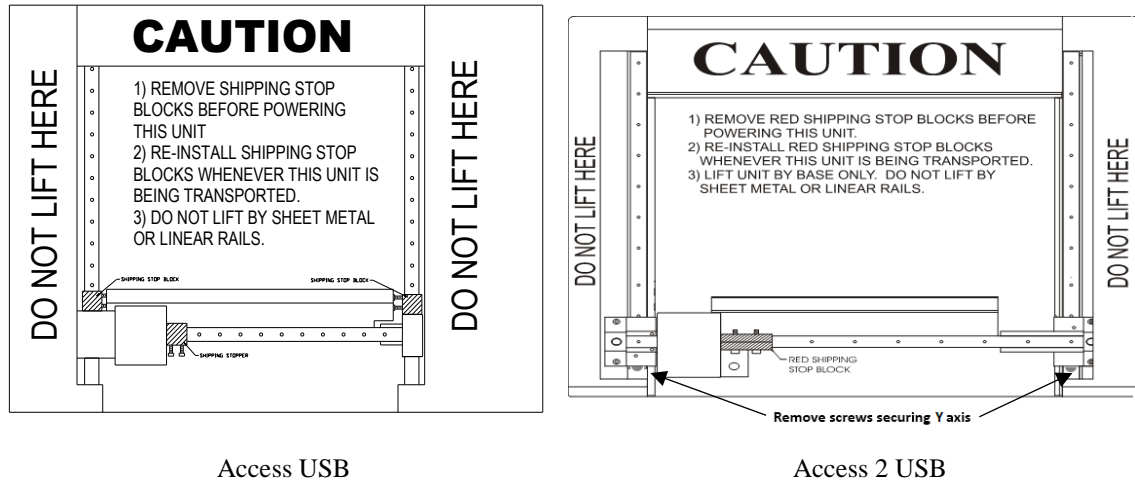
If you purchased CAD Tools then install using the supplied DVD. Follow instructions listed in the CAD Tools Tutorial.

If you are using Workstation in conjunction with a digital multimeter, follow the instructions listed in the Workstation DMM Tutorial.

**Do not run the software at this point. The hardware must now be installed to complete the installation.**

## Installing the Hardware

1. Locate the unpacking sheet that was supplied with the Prober.
2. Follow the unpacking steps as outlined in the unpacking sheet. Lift the unit by grabbing the base only. Do not lift the unit by grabbing the sheet metal covers or the X axis mechanism.



3. Place the Prober on a stable table or desk. The Tracker should be positioned to allow easy connection of the BNC cables to the Prober.
4. Remove the Red Shipping Stoppers using the Hex Allen tool attached to this sheet or in the tool kit. Do not discard these blocks. You will need them again if you transport the Prober to another location.  
**Note:** Access 2 USB Probers have the Y axis secured with two screws that insert through the left and right stop blocks.
5. Remove the red **Z Probe locking thumb screw** located near the top right side of the Z assembly. Do not discard this screw. You will need this screw for locking the Z probe assembly when transporting the unit. Your prober may have a different locking method consisting of a hairpin located near the bottom of the Z axis. Remove this **Z locking pin** and do not discard. You will need this pin for locking the Z probe assembly when transporting the unit.

## Setting the Line Voltage

The power entry module includes the power switch (0 = OFF, 1 = ON), power cord connector, and a removable fuse tray which selects the line voltage and holds the line fuses. If the correct voltage is not selected, open the tray door, remove the fuse tray. Turn the fuse tray over and reinsert and close the door. The correct voltage should be visible when the tray door is closed.

## **Connecting the Prober USB Interface to the Computer**

Locate the USB cable and connect the correct end to the Prober USB port. Connect the other end to the appropriate USB port on the computer

## **Connecting a Tracker to the Prober**

Follow the instructions to setup the Huntron Tracker.

Connect the BNC cables included with the Huntron Access to the Huntron Tracker. Connect the COMMON BNC on the Huntron Tracker to the COMMON BNC on the Huntron Access. Connect the CHANNEL A or SIGNAL BNC on the Huntron Tracker to the PROBE BNC on the Huntron Access.

If using the built-in Access Tracker connect the Channel A BNC on the Huntron Access to the Probe BNC on the Huntron Access using the supplied 12" BNC cable.

Connect the power cords to the Tracker (as needed) and the Huntron Access.

Connect the USB cable to the USB port on the Huntron Access. Connect the other end of the USB cable to an available USB port on the computer.

Turn on the Huntron Access and any attached instruments.

## Installing the Device Drivers

The device drivers below may install in a different order on some PCs than specified below. If so, find and follow the steps below that pertain to the drivers as they are loaded.

**Note for Windows 64bit users:** Some of the device drivers will attempt to auto install and fail. After following the steps below (they may not all occur), open device manager and look for items with yellow exclamation points. Update these drivers by right clicking on them. Select the install DVD for the source of the drivers if needed.

1. Insert the Huntron Workstation DVD in your DVD drive. If you have installed the Huntron Workstation Software, you are now ready to install the drivers.
  2. Turn on your computer and allow Windows to boot.
  3. The following driver installations may happen in a different order.
  4. If prompted to connect to Windows Update Select No, not at this time.
  5. An Add New Hardware wizard prompts you to install a “HS-20USB”. Click Next.
  6. If the wizard prompts you to search for drivers, select Automatic and click Next.
  7. When a message appears, indicating that the driver has not passed Windows Logo testing, click “Continue anyway”. Click Finish.
  8. If prompted to connect to Windows Update Select No, not at this time.
  9. An Add New Hardware wizard prompts you to install a “USB Serial Port”. Click Next.
  10. If the wizard prompts you to search for drivers, select Automatic and click Next.
  11. When a message appears, indicating that the driver has not passed Windows Logo testing, click “Continue anyway”. Click Finish.
  12. If prompted to connect to Windows Update Select No, not at this time.
  13. An Add New Hardware wizard prompts you to install a “USB Device (Sensoray 2250)”. Click Next.
  14. If the wizard prompts you to search for drivers, select Automatic and click Next.
  15. When a message appears, indicating that the driver has not passed Windows Logo testing, click “Continue anyway”. Click Finish.
  16. If prompted to connect to Windows Update Select No, not at this time.
  17. An Add New Hardware wizard prompts you to install a “2250 WIS”. Click Next.
  18. If the wizard prompts you to search for drivers, select Automatic and click Next.
  19. When a message appears, indicating that the driver has not passed Windows Logo testing, click “Continue anyway”. Click Finish.
- Huntron Access USB with Tracker or Huntron Access 2 USB with Tracker Only
- a. If prompted to connect to Windows Update Select No, not at this time.
  - b. An Add New Hardware wizard prompts you to install a “Huntron Tracker Model 30”. Click Next.
  - c. If the wizard prompts you to search for drivers, select Automatic and click Next.
  - d. When a message appears, indicating that the driver has not passed Windows Logo testing, click “Continue anyway”. Click Finish.

Some of the device drivers may have attempted to auto install and failed. Open device manager and look for items with yellow exclamation points. Update these drivers by right clicking on them. Select the install DVD for the source of the drivers if needed.

## Starting the software

A Workstation icon will be created on your windows desktop. Double click this icon to start the software.

The Huntron Workstation Activation dialog is displayed. This software is only licensed to be used on one Tracker and/or one Prober. The activation codes are generated by Huntron and are specific to the Tracker and Prober serial numbers. The activation codes are printed on the software DVD. If you cannot find activation codes, call Huntron technical support (425-743-3171) and provide the serial numbers for the Tracker and the Prober.

## Follow the software tutorial.

Huntron Workstation software tutorials are included in the software DVD Documents folder and in the default installed folder (C:\Program Files\Huntron Workstation\Documents).

It is also available in Tutorial section of the Help menu in the Huntron Workstation software. The file requires Adobe Acrobat Reader to be installed. The tutorial will enable a new user to get acquainted with most of the software features.

Whenever you need detailed information, click Help in the appropriate screens. The help feature is context sensitive, so you can click on the green highlighted text to get additional information on related topics.

All user's manuals are located on the Manual CD (F-06-5217) included in your package. Refer to the appropriate manual for the hardware you have.

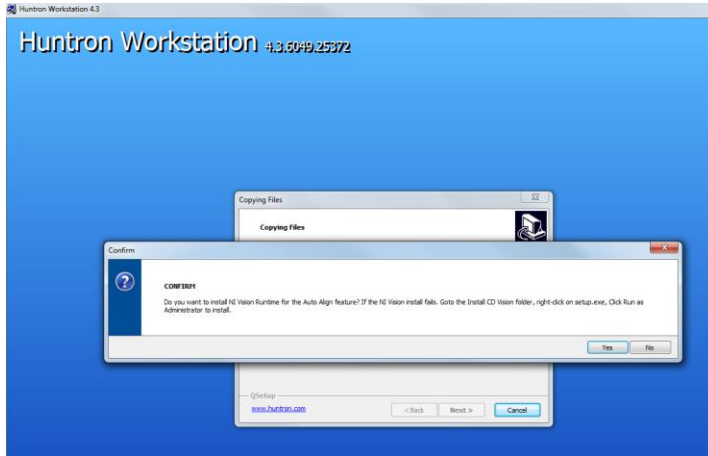
If you need further assistance, call the VI-tracer Technical support at +30-210-5986179 or +30-210-5986213  
email: [technical@vitracer.com](mailto:technical@vitracer.com)

## Appendix A

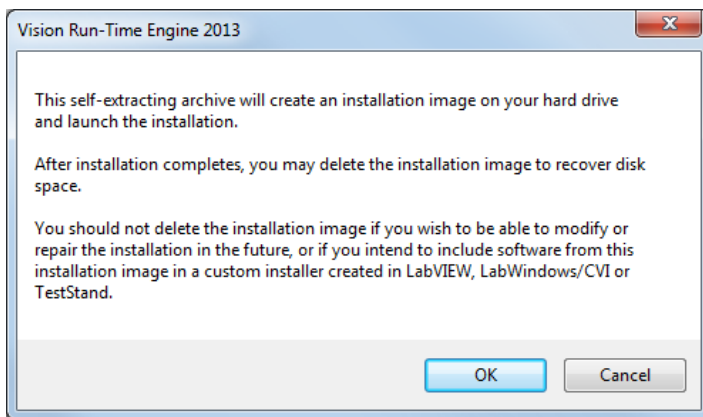
### National Instruments Vision Runtime Installation

This section is to provide more details on the installation of the NI Vision Runtime software used with the Access Prober Auto Align function.

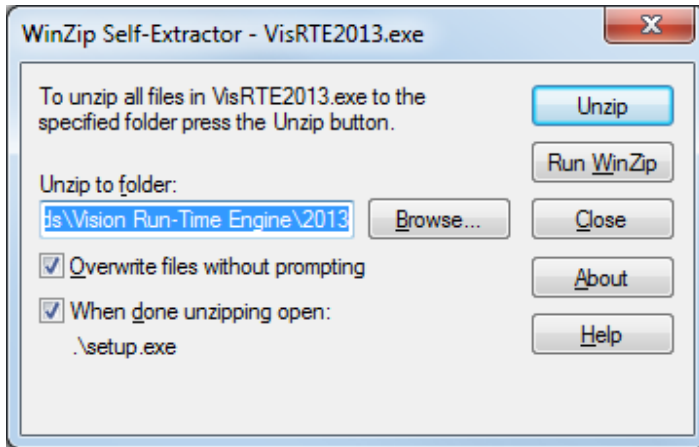
During the installation of Huntron Workstation you are be prompted to select for the installation of the NI Vision Runtime. Users of Huntron Access, Access 2 and Access DH should click **Yes**. This software is used with the Auto Align feature in Huntron Workstation.



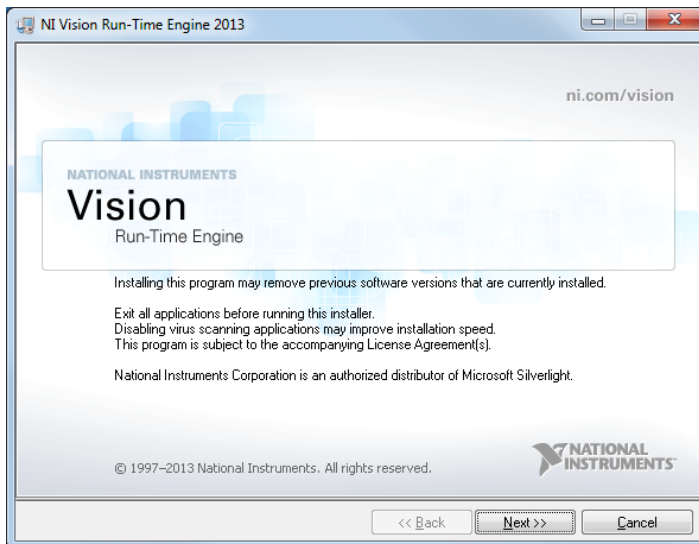
In general, you will be prompted with various options as the installation process proceeds. In most cases, clicking **OK**, **Next** or **Continue** will move the process to the next step.



Select **Unzip** when prompted to extract the NI Vision installation files. Use the default selected path for the extraction.

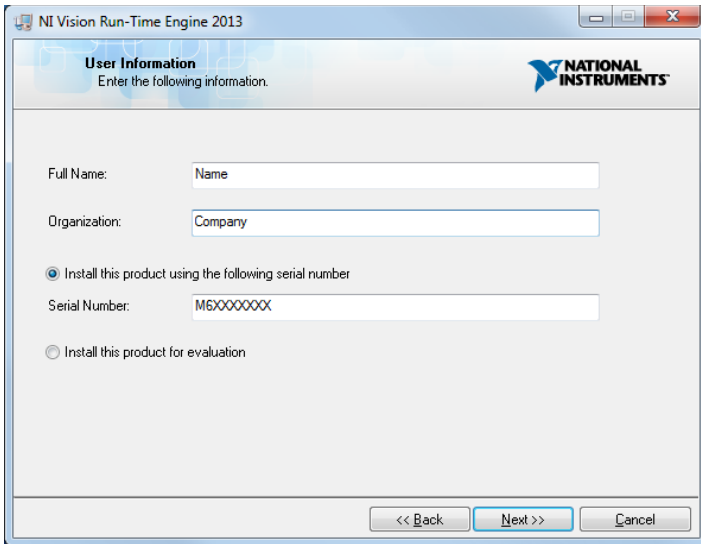


Select **Next** to proceed with the installation.

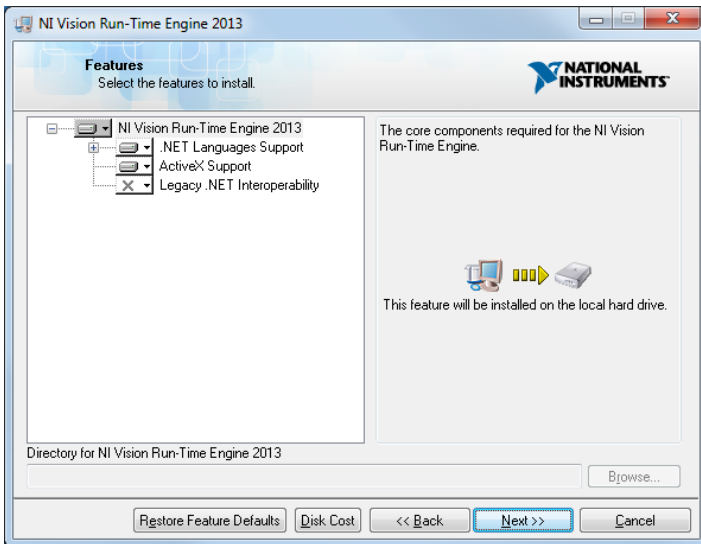




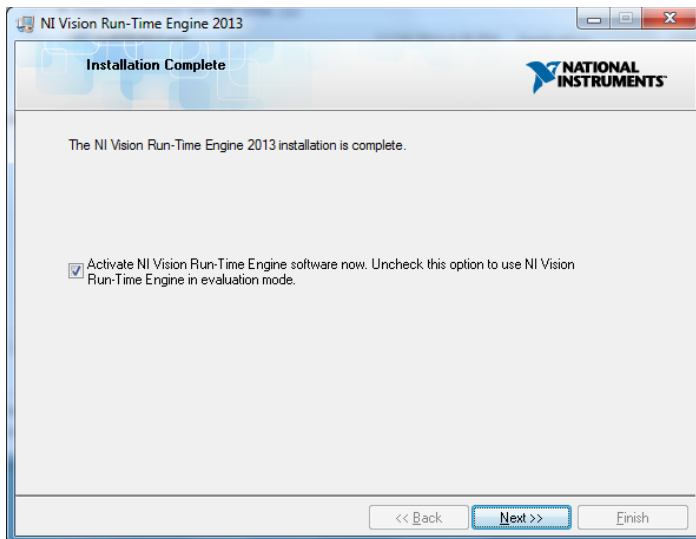
When prompted, input the requested **name, company serial number** information. The serial number is printed on the Workstation DVD, the Workstation software envelope and on the NI Vision license information sheet included with the system. Click **Next** to continue.



Use the default selected NI Vision applications for install as shown below. Click **Next** to continue.



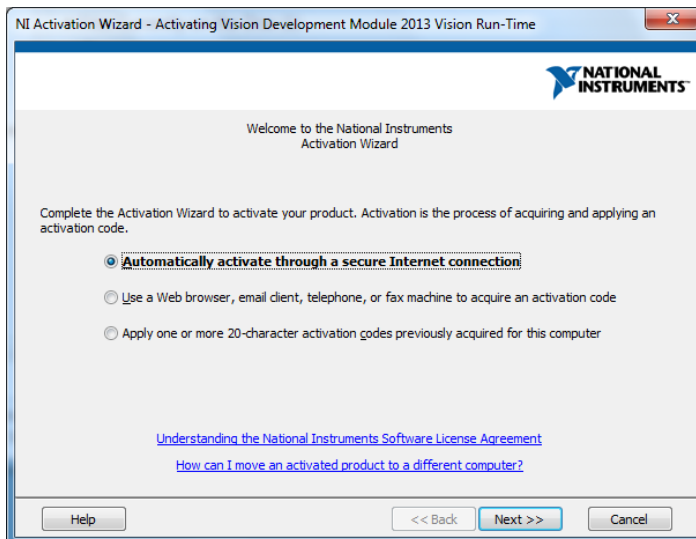
When the initial installation is complete you will be prompted to activate the software. It is **highly recommended that the computer have internet access** at this point to allow for much easier activation. Click **Next** to continue.



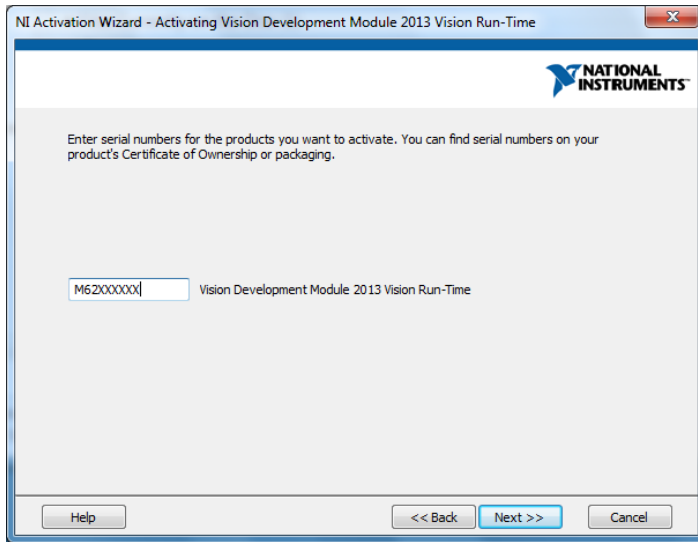
You can select the method for software activation from online, web browser, email, phone or fax. **Automatically via an internet connection is highly recommended.**

If you do not have internet access with the connected computer then email or phone are the next best options. You will be required to have a NI Vision serial number and computer ID (the ID number is generated when you select the phone or email option) to receive the 20 character activation code from National Instruments.

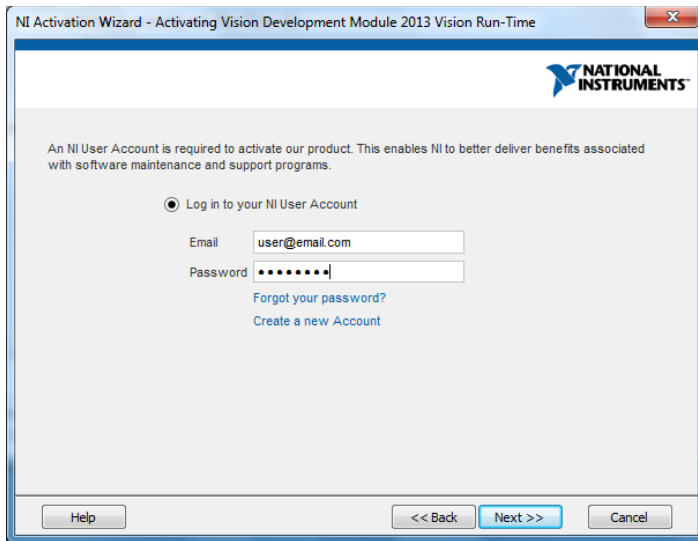
Click **Next** to continue.



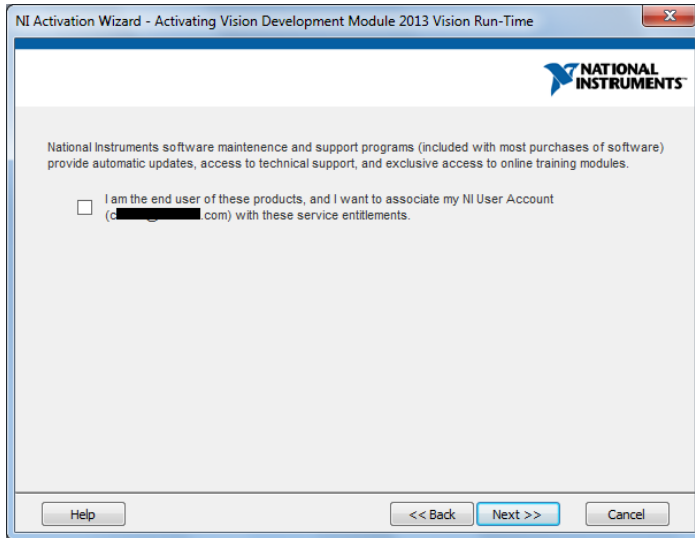
Input the NI Vision serial number supplied with your Huntron Access system.  
Click **Next** to continue.



Input your **NI User account user name and password**. If you do not have a NI account, use the link in the window (Create a New Account) to create one.  
Click **Next** to continue.



You will be prompted to choose to have the NI Vision product linked to your NI account. It is recommended that you **uncheck this option** to avoid the time consuming registration transfer process associated with this process.  
Click **Next** to continue.



Once the activation is complete, the window below will be displayed. Click **Finish** to close the installation.

